

MOVE

MPA 20-12

12V-20Ah - Cyclic AGM Battery

APPLICATIONS

Powerchairs / home mobility equipment
 Scooters, 3- and 4 wheels
 Toys for children
 Lifts (stairs / bathrooms)
 Personal Carriers
 Utility Vehicles

SPECIFICATIONS

Nominal Voltage	12V	
Nominal capacity @20 hour rate	20Ah	
Capacity at 25°C	10 hour rate	18Ah
	5 hour rate	16,5Ah
	1 hour rate	11Ah
Shelf time @20°C up to 70%	in months	9
Internal resistance (at 1 KHz)	approx. 10 mΩ	
Operating temperature for (dis)charge	-15°C to + 40°C	

DIMENSIONS

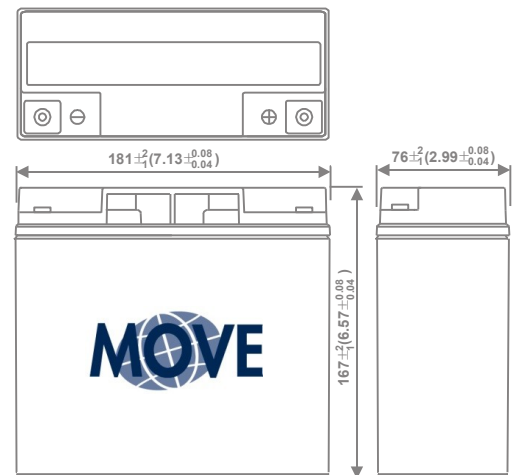
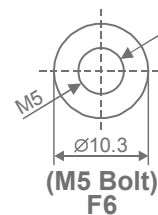
Dimensions LxWxH (T) in mm	181x76x167 (167)
Weight	5,9kg (±2%)
Separator	AGM, Glass Mat
Case and cover	ABS (UL94-V0 optional)
Terminal	M5 Bolt
Torque setting (recommended)	M5: 2,9 Nm
Maximum allowable torque value	M5: 4,9 Nm

CHARGING

Charging Voltage cycle use 14,4 to 15 Volt
 Float charge Voltage 13,5 to 13,8 Volt
 Charging current, minimum 2A - maximum 3A

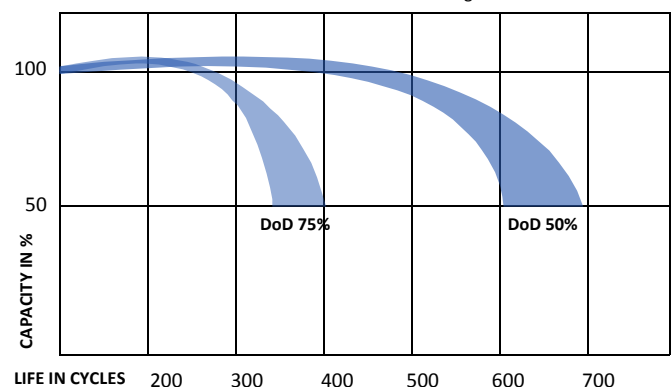
CYCLE LIFE

To maximize the cycle life of the battery, we recommend to charge the battery fully after use. The total life of the battery, is very dependant on the correct charge and depth of discharge per cycle.



BATTERY LIFE UNDER CYCLIC USE

Tested in conformance to the BCI testing method



* Cycle life is measured with a discharge current 0,2C, charged 16h and rest capacity of 2/3 Cn